



Andrea Matouskova
Director

Short history of the probation system in the Czech Republic

Probation and Mediation Service Act, No. 257/200 Coll.

Part of a systematic change of criminal law

- new methods of punishment and correction of offenders

January 1, 2001

Work with offenders *and* victims under one umbrella

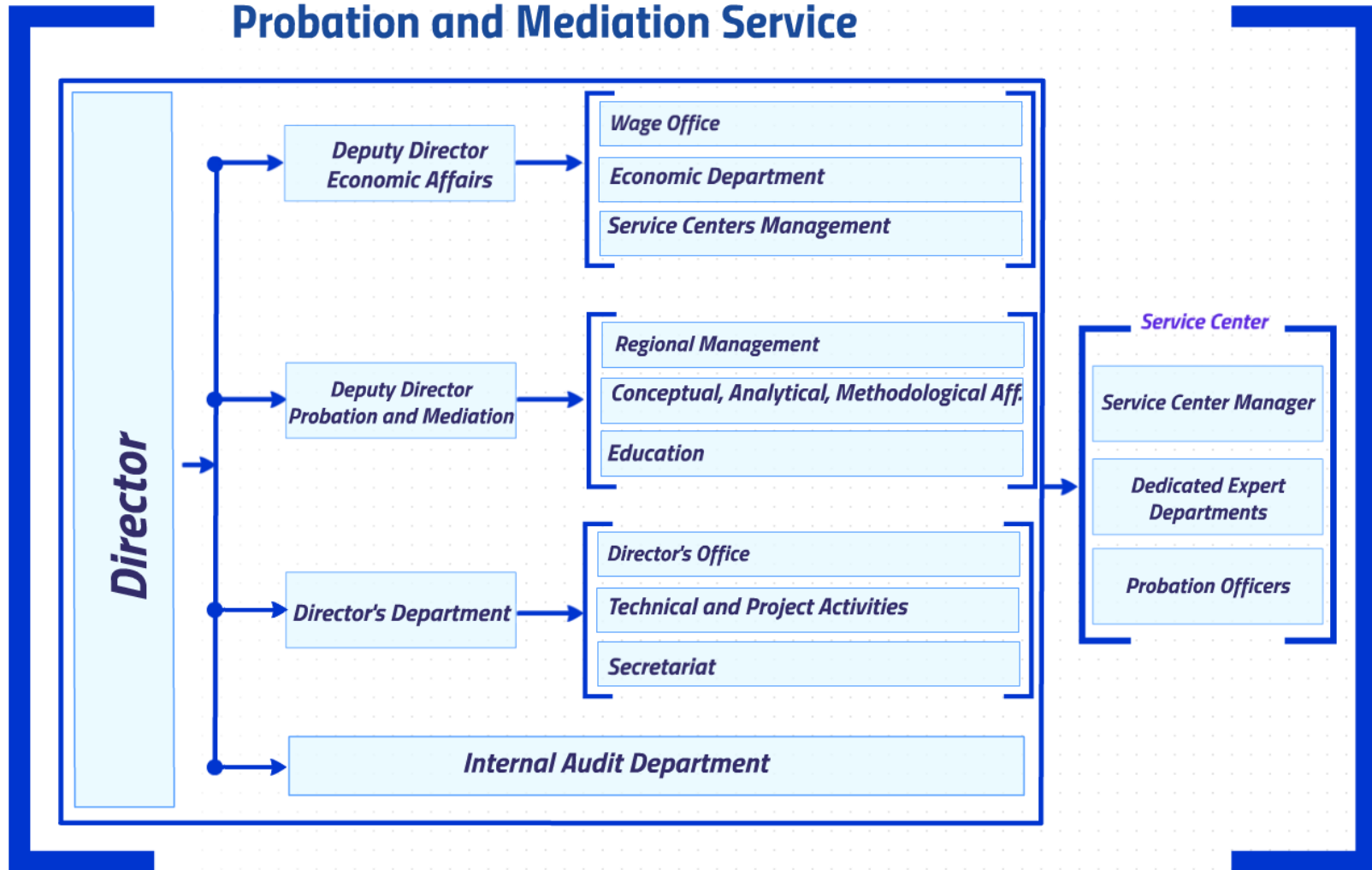
→ emphasis on restorative approach

432 employees – mostly probation officers (320)

Organization

Ministry of Justice

Probation and Mediation Service



Board of Probation and Mediation

Main competences

All stages of criminal procedures

Effective solution of crime-related conflicts

Efficient and dignified execution of alternative sentences

Restorative programs

Emphasis on:

- victim interests
- community protection
- crime prevention



Statistics of 2015

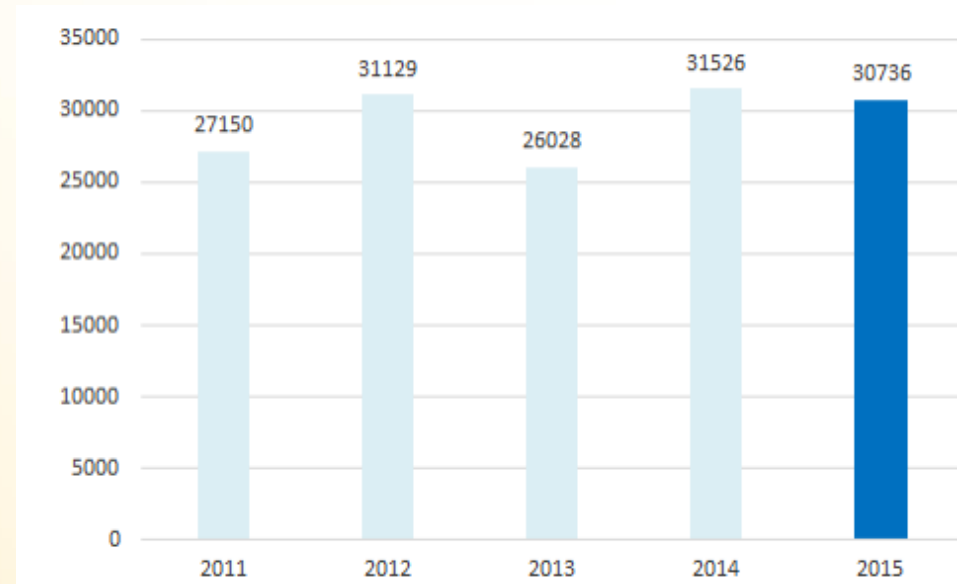
30 736 new cases in 2015

Youth criminality **less than 5 %**
(1 443 cases)

Average is 80-90
cases/employee/year

Pre-sentencing vs. post-
sentencing = **38 : 62 %**

New cases 2011 - 2015



Main strengths

Restorative principles

Professional services

- highly educated, dedicated and experienced staff
- strong position in the Czech justice system

Equal and balanced approach to offender and victim + community involvement

Part of a strong network of governmental and nongovernmental organizations



Main challenges and plans for the future

Chronical understaffing

EMS implementation

Probation program centers

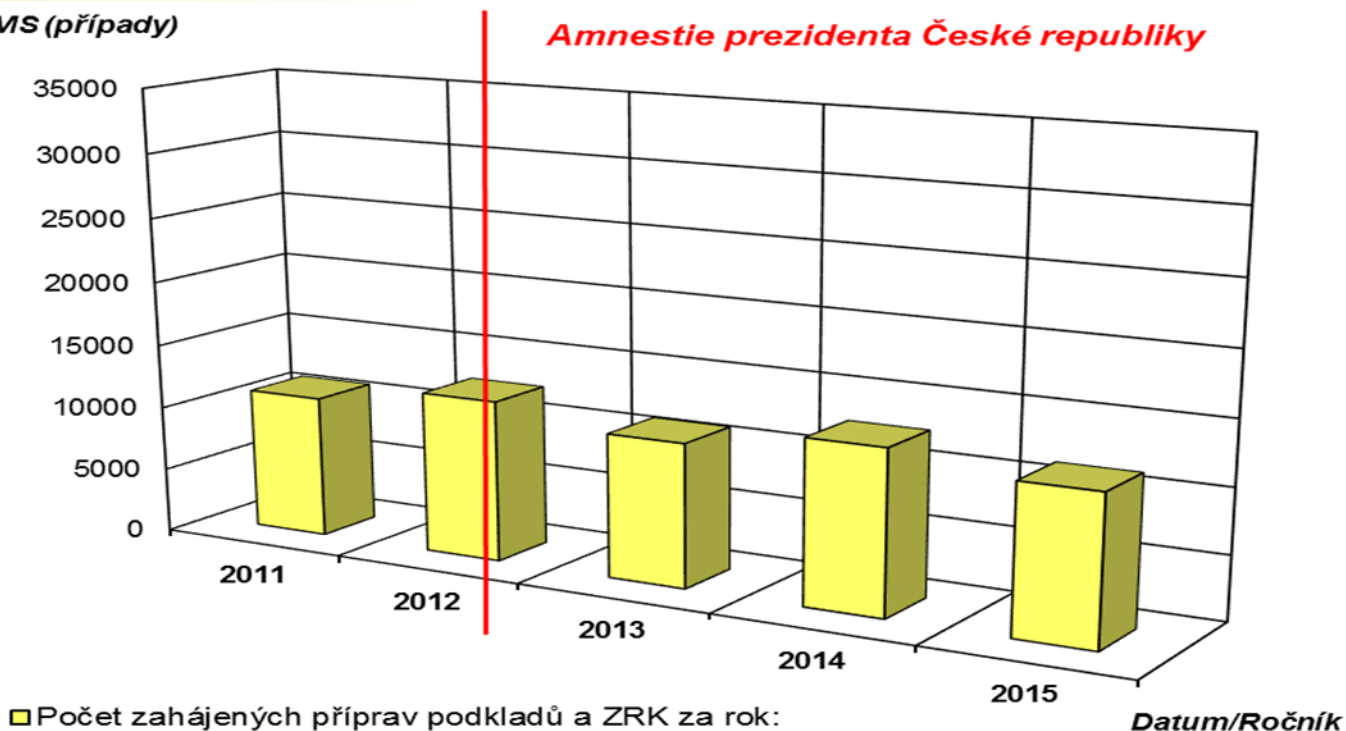
Halfway houses (residency program for conditionally released offenders)

Community service reforms (providers, insurance issues)

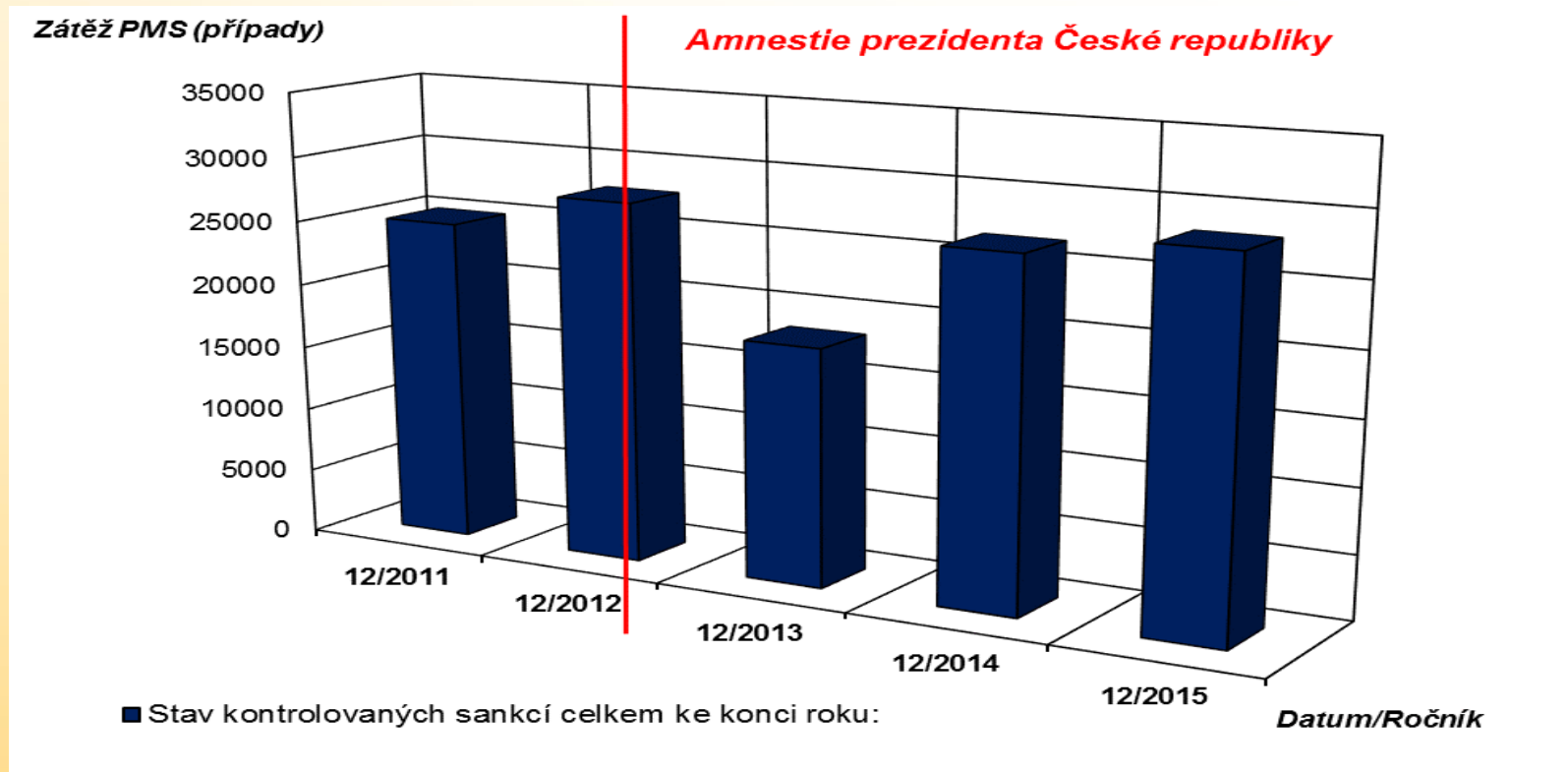


Overload of cases in pre-sentence agenda

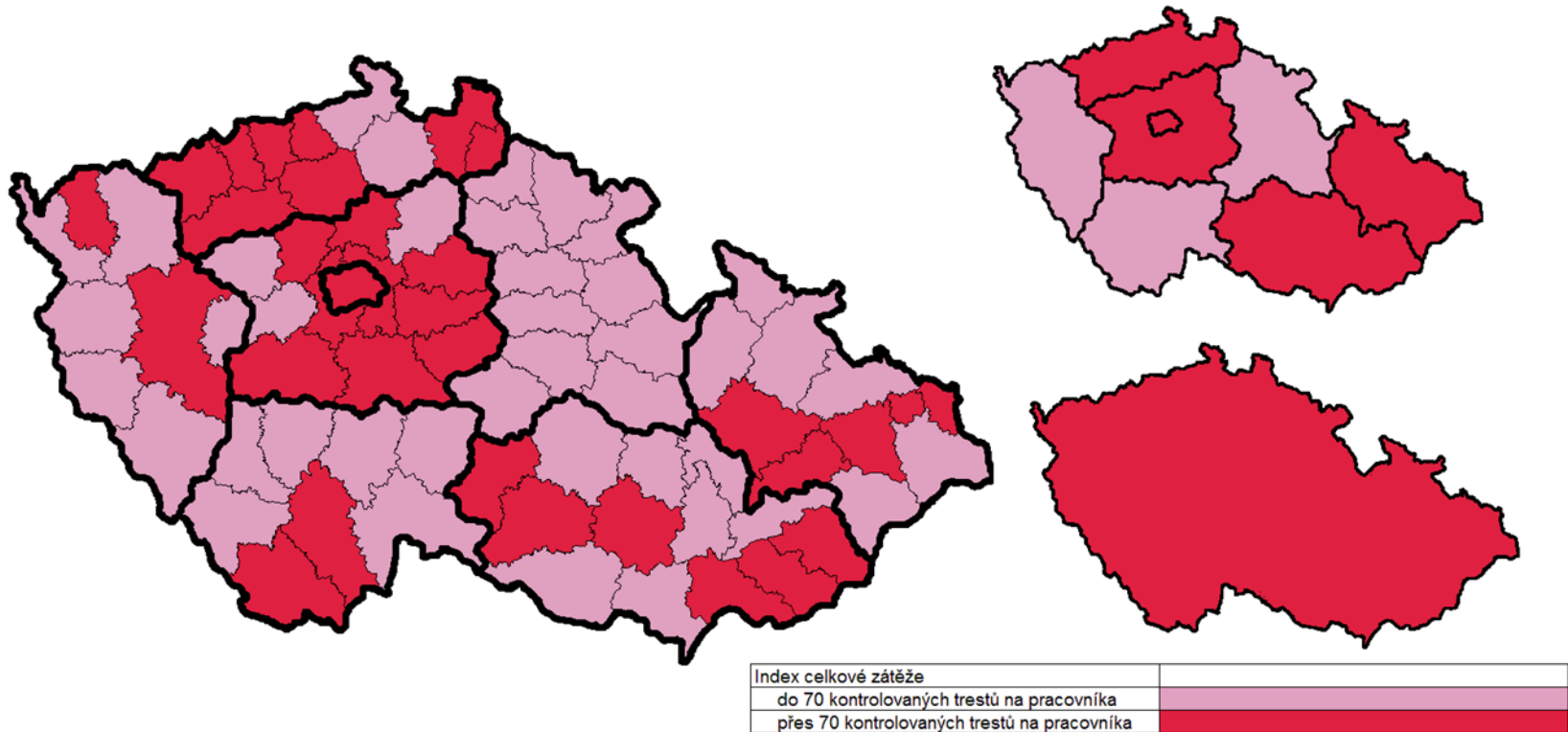
Zátěž PMS (případy)



Overload of cases in probation agenda



Ongoing overload of probation



Staffing increase in 2017 (probation)

