



Immigration Enforcement



Presented by:

Cheryl Cates

Deputy Director

Head of Prison Operations and Removals Team

Criminal Casework

Date: 25 November 2016

- **Our Home Office mission is to keep the country secure and our citizens safe. Our purpose is to cut crime, prevent terrorism, control immigration and protect the vulnerable.**



Preventing
terrorism



Cutting crime

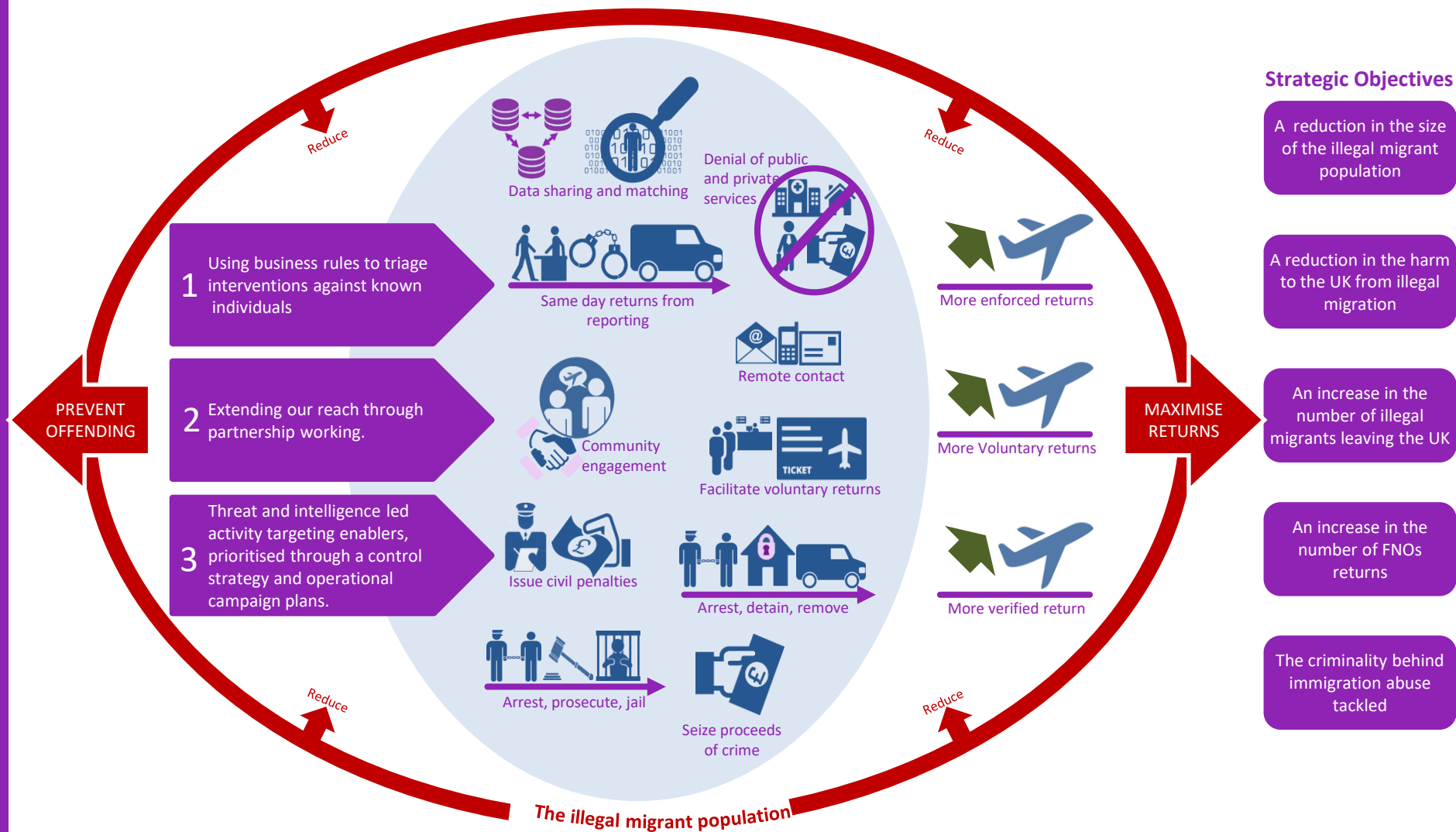


Controlling
immigration

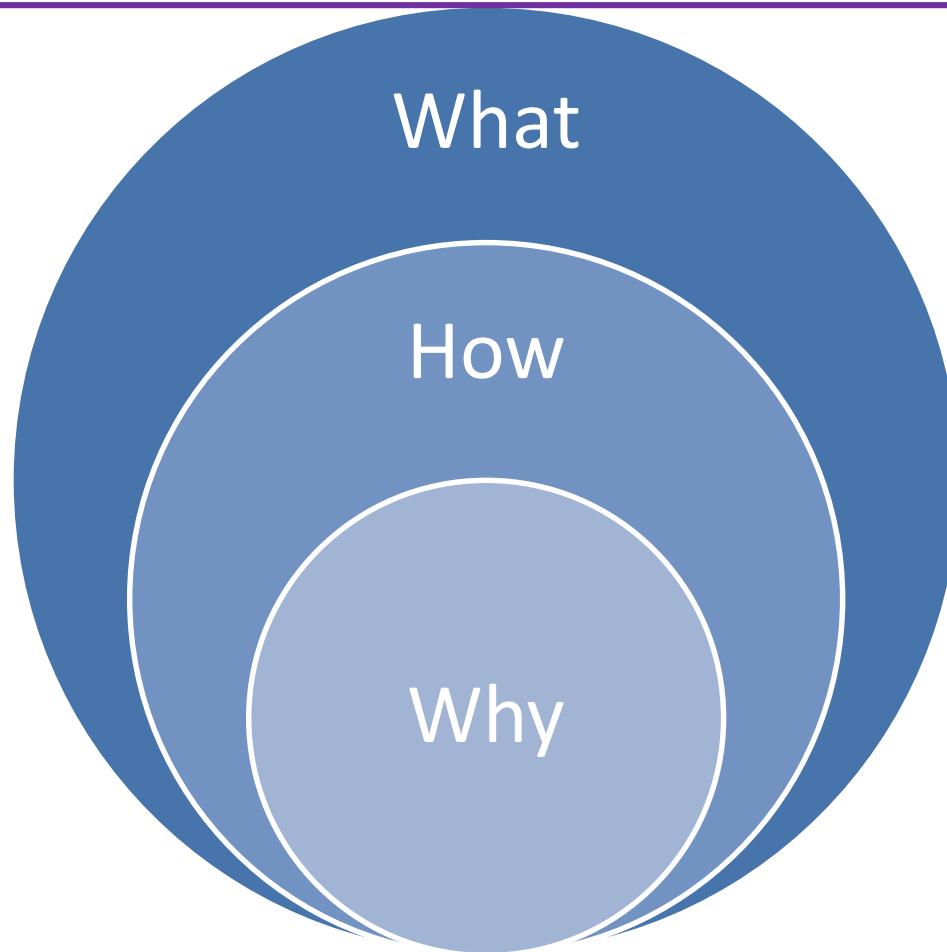


Protecting the
vulnerable





Criminal Casework

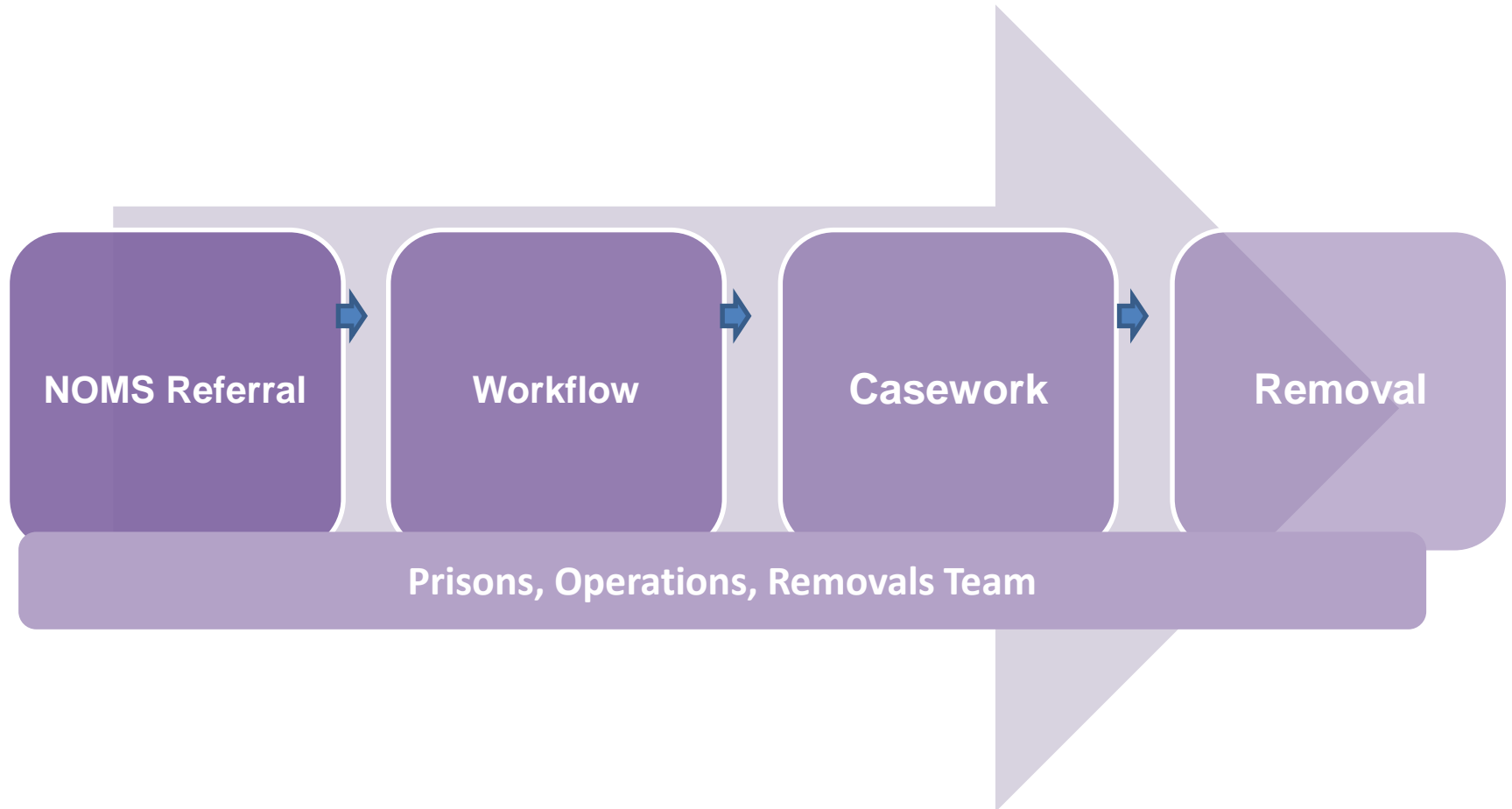


Development of the UK model

- FNO crisis, the 8 point plan
- Criminal Casework Directorate
- The first FNO only prison and the hub and spoke model
- A Cross Government approach /foreign criminality strategy



Criminal Casework Structure



Removals

WE REMOVE FOREIGN NATIONAL OFFENDERS FROM THE UK, PROTECTING THE PUBLIC FROM HARM



5,810 foreign nationals offenders (FNOs) removed from the UK in 2015-16, the highest number ever. **32,000** removed since 2010.



2,071 FNOs removed during the Early Removal Scheme (ERS) period in 2015-16, saving the tax payer approximately £25m.



Total prison population 85,967

Foreign nationals serving custodial sentences 6637 (7.7%)

Foreign nationals on remand 1740 (2%)



3,485 (60%) of overall FNO removals in 2015-16 were EEA nationals.



Public and political scrutiny



Parliament:

- The **Public Accounts Committee** and the **Home Affairs Select Committee** scrutinise our work on FNOs
- We respond directly to MPs interest through correspondence

Public:

- Victims of crime and their families can request information from Criminal Casework on whether we are pursuing deportation on an FNO
- We respond to approximately 15-20 **press queries** a month on a range of FNO related topics



Hubs & Spokes

HMP Risley
Altcourse
Buckley Hall
Forest Bank
Garth
Haverigg
Kennett
Kirkham
Lancaster
Farms
Liverpool
Manchester
Preston
Styal
Thorn Cross
Wymott

HMP Hewell
Birmingham
Featherstone
Oakwood
Brinsford
Dovegate
Drake Hall
Stafford
Swinfen Hall
Foston Hall
Eastwood Park

PORT Leeds

HMP Moorland
Lindholme
Whatton
Nottingham
Lincoln

HMP The Mount

HMP Maidstone
Rochester
Cookham Wood
Sheppey Cluster:
Elmley
Swaleside
Standford Hill
East Sutton Park
Blantyre House

HMP Huntercombe

HMP Wandsworth
HMP Wormword Scrubs
HMP Pentonville

PORT Croydon



Immigration Enforcement

FNO Hubs & Spokes

- **FNO only** prisons – HMP Huntercombe & HMP Maidstone
- **FNO hub** prisons – embedded team of Immigration Officers (IOs)
- **FNO spoke** prisons – regular visits by IOs from the hub prisons
- **Other** prisons – FNOs on remand and those not meeting CC criteria (short sentences)



Co-operation with NOMS

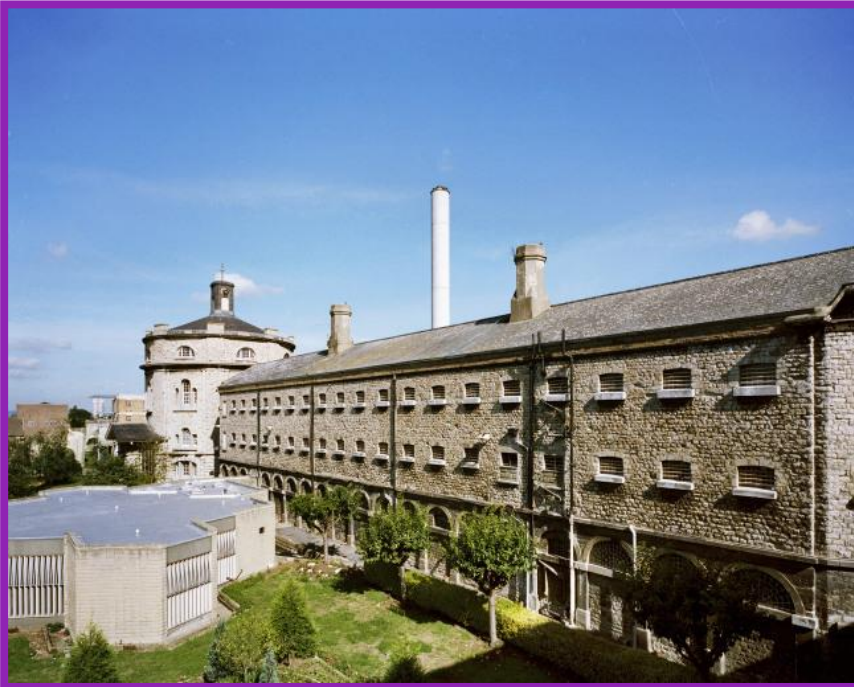
- FNO only HMP Maidstone and Huntercombe
- HMP Risley
- HMP Pentonville Pilot
- Prison Estate Transformation - a new model
- HMP Wandsworth



FNO only

HMP Huntercombe **447**

HMP Maidstone **610**



Immigration Enforcement

HMP Risley hub

Population **1107** FNO **120**

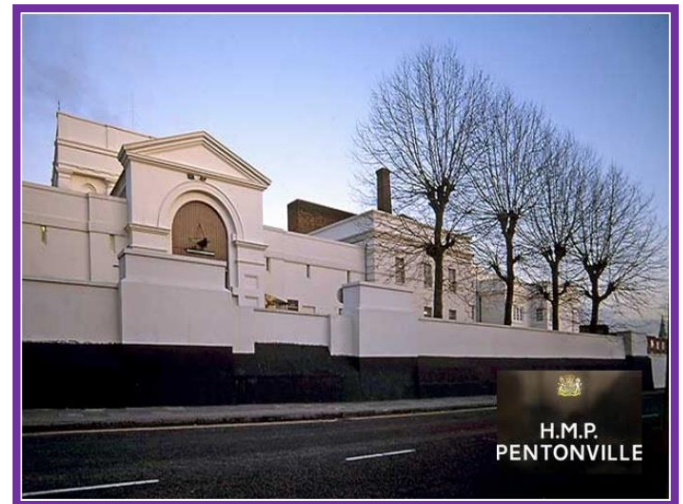
The Welcome Centre



Remand Pilot-Transformation

HMP Pentonville

Close collaboration with prison reception so immigration are notified of the arrival of all newly arrived FNOs



Prison Estate Transformation

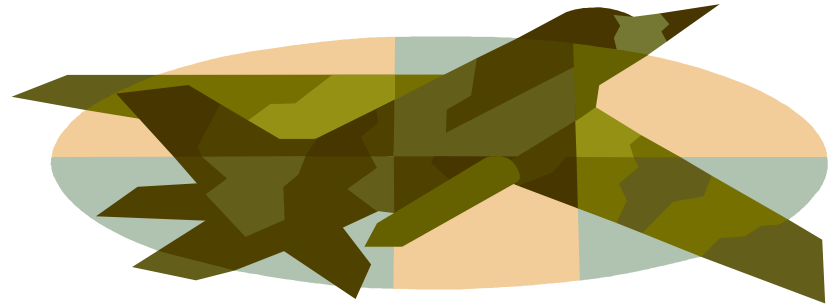
HMP Wandsworth

16 remand only prisons

- HMP Wandsworth
- HMP Durham
- HMP Holme House
- Biometric capture



Quick Wins



Removing those who want to go



Criminal Casework

Key Removal Schemes

- EARLY REMOVAL SCHEME (ERS)
- FACILITATED RETURNS SCHEME (FRS)
- TARIFF-EXPIRED REMOVAL SCHEME (TERS)
- PRISONER TRANSFER AGREEMENT (PTA)



FNOs in the Community



**Managing Risks in our
Communities – working with NOMS
Offender Managers**



Managing risk in the community

Non-Detained FNOs Banding

Ensuring Focus on the Highest Risk Cases working with Offender Managers

<u>Band 1:</u> Highest Risk	<ul style="list-style-type: none">➤ Greater intervention to create a 'hostile environment'➤ Increased focus on compliance with restrictions➤ Increased liaison with Public Protection Partners, including NPS and Police	<u>Band 2:</u> Medium Risk
<u>Band 3:</u> Lower Risk Removable Cases with Casework Barriers	<ul style="list-style-type: none">➤ Some intervention to create a 'hostile environment' Less liaison with Public Protection Partners➤ More written contact between Case Owner	<u>Band 4:</u> Lower Risk Less Removable Cases with Casework Barriers



Criminal Casework

Nexus- working with the police

Nexus is a partnership between Immigration Enforcement and the police which focuses on offending by foreign nationals.

Three key strands:

- Immigration officers in police custody suites
- Proactive targeting of 'high harm' foreign criminals
- Disruption and deterrence of criminality

The Foreign Criminality Programme



k18422763 fotosearch.com



Working with HM Courts Service

HMP Lincoln

HMPS staff member based in Lincoln Magistrates court alerting regional PORT team of identified FNOs



Crawley Pilot

Closer working between PORT, court and OMU for the management of FNOs



Immigration Act 2016

.

- GPS
- New search powers for prison officers
- Information sharing and obtaining identity documents



The future

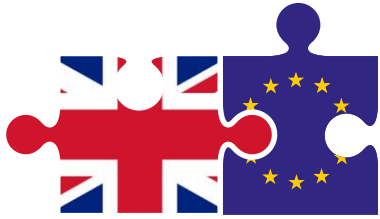
Opportunities

- Prison Estate Transformation
- Lead Minister Engagement
- Foreign Criminality programme

➤ **Challenges**

- Non-compliance
- Returns
- Brexit





The UK exiting the European Union

The Home Office is leading on the Government's plans for:-

- (i) Immigration,
- (ii) Security, Law Enforcement and Data Sharing; and
- (iii) Ireland / Common Travel Area

to prepare the UK for exiting the European Union (EU).

This is to support the Department for Exiting the European Union (DExEU) develop its wider negotiating plan on behalf of the UK.

IE Strategy and Planning Directorate is coordinating our responses to policy developments, drawing on a network of Brexit SPOCs (Single Points of Contact) representing all IE business areas.

Any Questions?

