



法務部
Ministry of Justice ,Taiwan

The knowledge Management and Database Development of Electronic Monitoring System of Taiwan Probation Service

Yu Ming-Jen

游 明 仁

2nd World Congress on Community Corrections
Los Angeles, U.S.A 2015. 7. 15



History about E.M

Date	Things	Remark
2005.01.21	Add EM to Sexual Assault Crime Prevention Act NO.20	Only on night.
2005.08.03	Regulations of Electronic Monitoring for Sexual offenders under Probation / Parole Supervision	
2005.12.13	Pilot of home detention	
2006.12	Implementation of RFID	RFID
2009	Development of GPS	GPS
2011.10.25	Modify Sexual Assault Crime Prevention Act NO.20	E.M on the time.
2011.11.09	Modify EM to Sexual Assault Crime Prevention Act	
2012.01.01	Implementation of the new Sexual Assault Crime Prevention Act	
2013.10.30	Complete of GPS	
2014.01~ 2015.12	Research Program	3 sub-study
2016~	Up to 4G	Wifi



Subject of E.M

❑ Subject

1. Law :

(1) Sexual Assault Crime Prevention Act

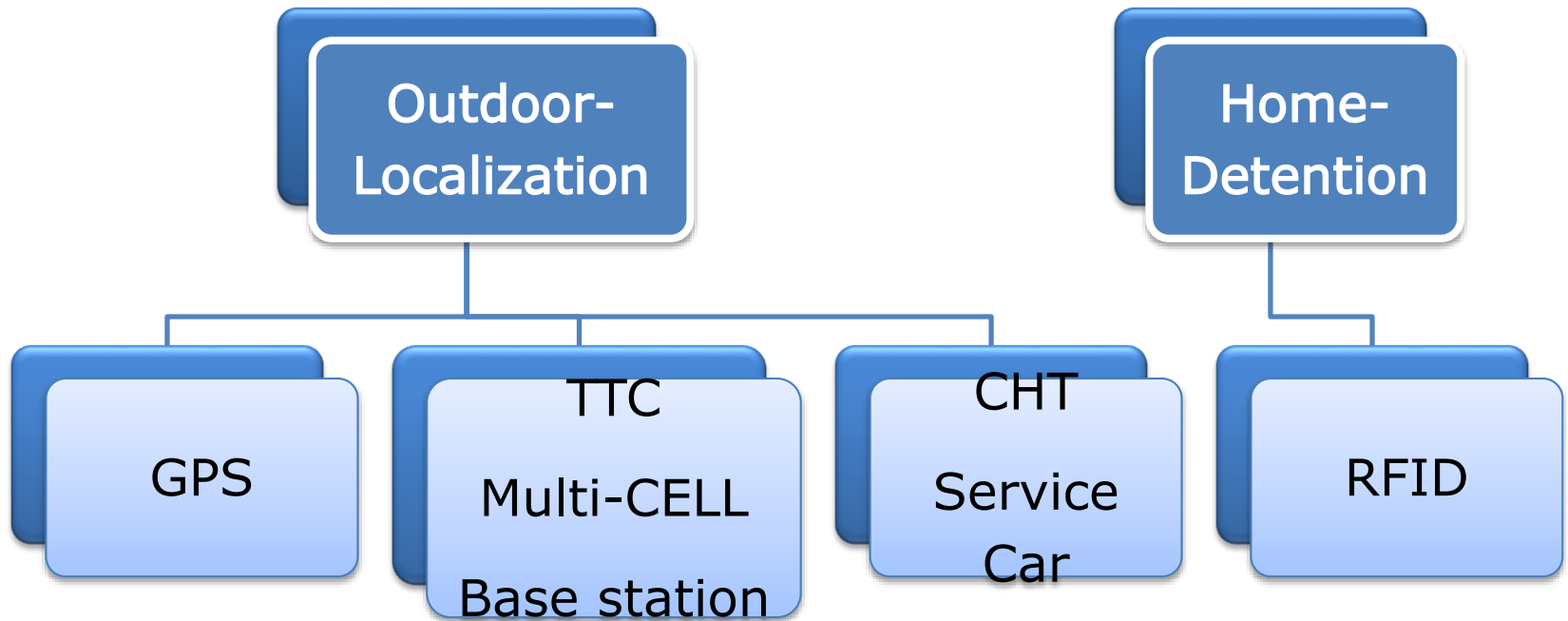
(2) Regulation of Electronic Monitoring for Sexual

offenders under Probation / Parole
Supervision

2.Only use to Sexual Offenders.

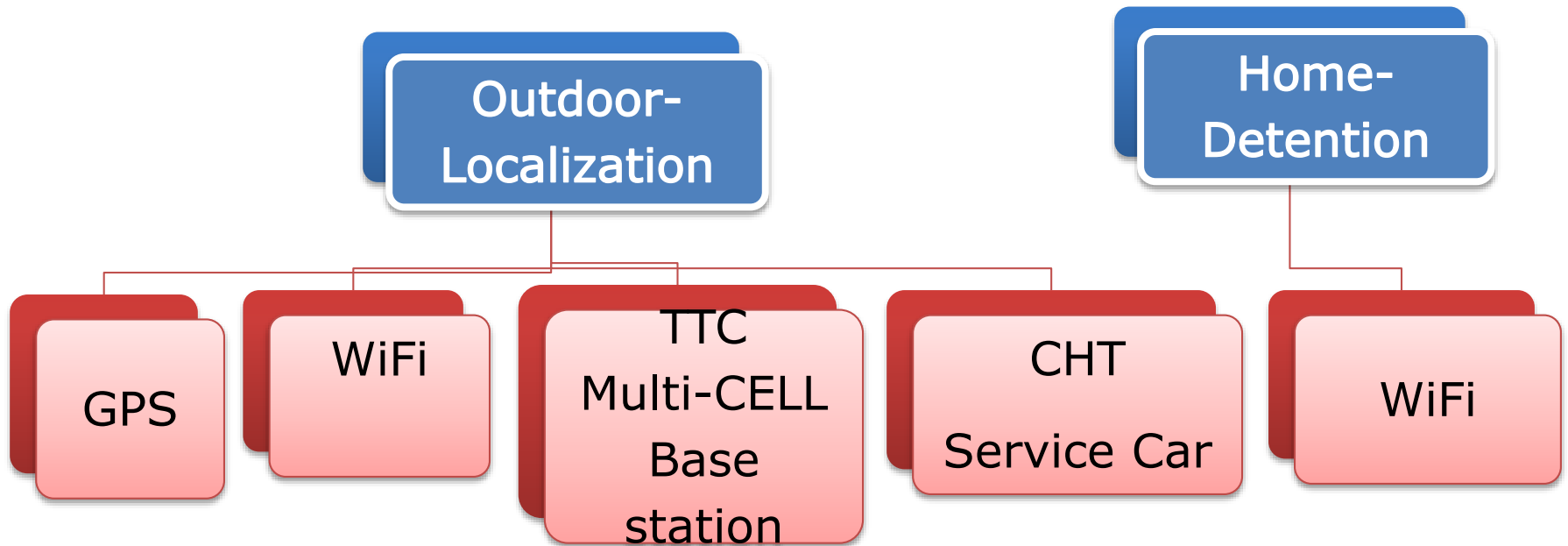


Currently



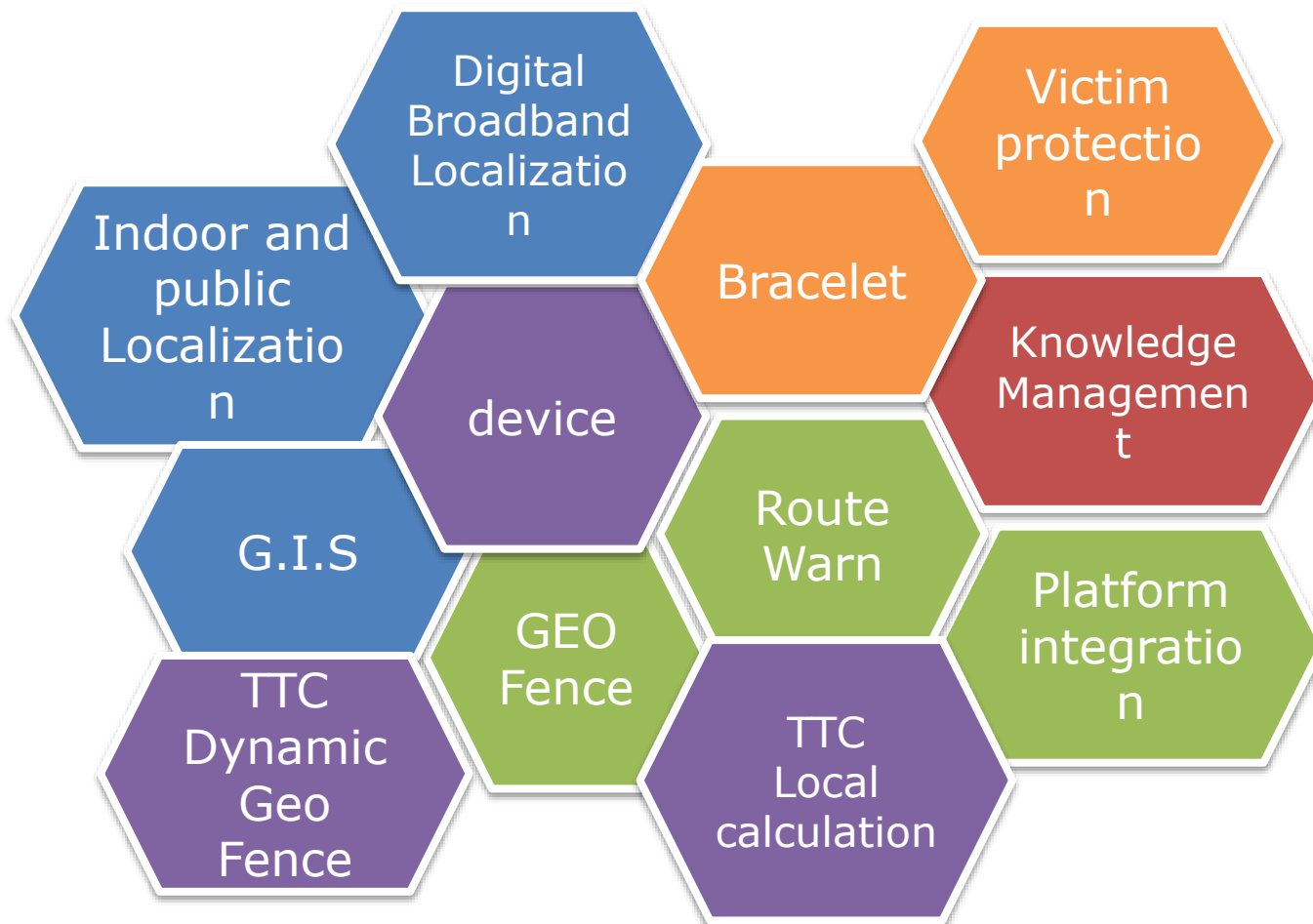


Next Generation





Comprehensive Technology Monitoring



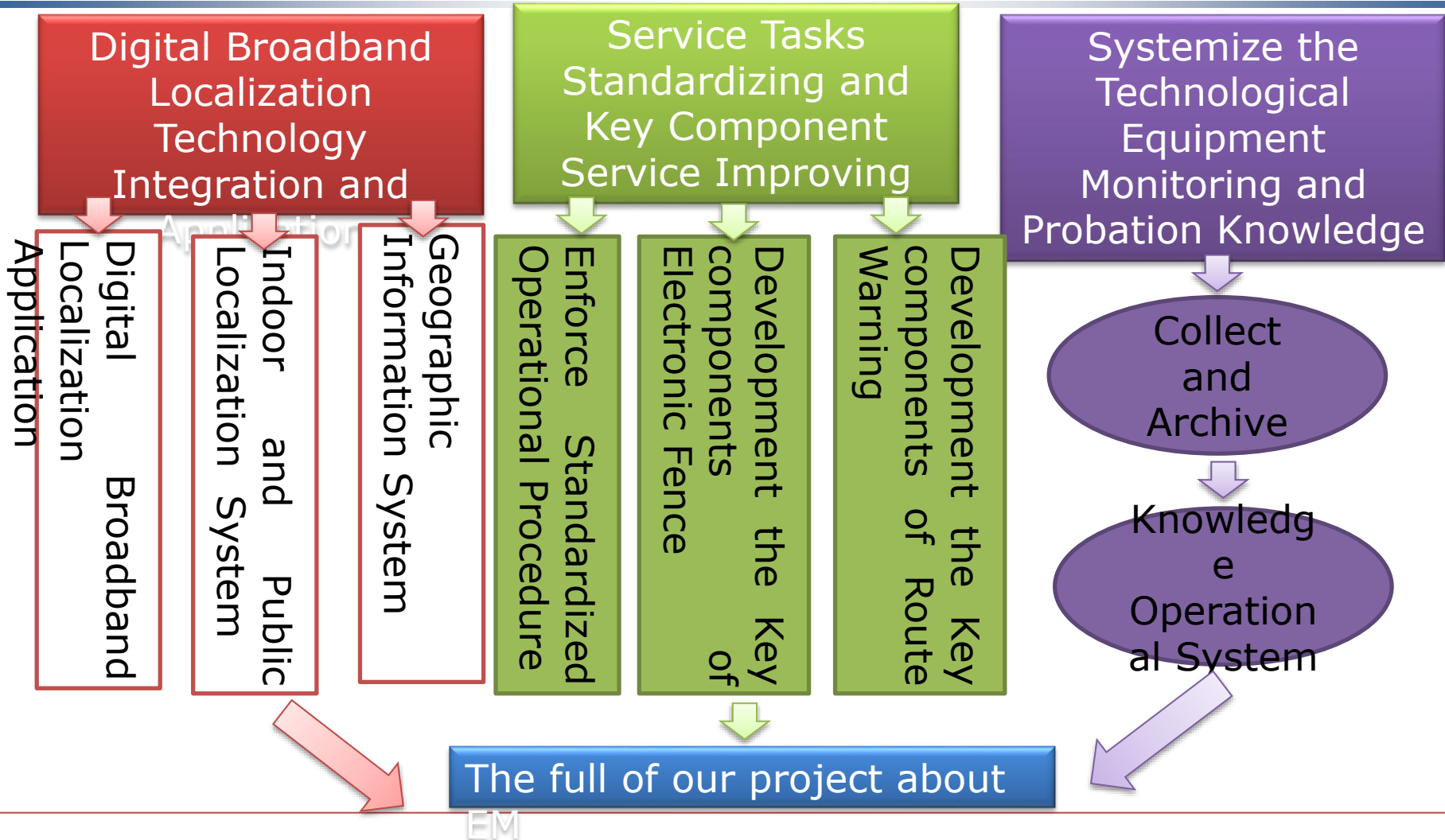


Research Purpose

- Research purpose :
 1. Collecting expects knowledge
 2. Sharing the experience
 3. Case management strategy



Research Process





Research Methods

- ❑ Step1 : Qualitative research
 - interviews
- ❑ Step2 : Content Analysis
 - Case study
- ❑ Step3 : System Analysis



Research Methods

(1) Client data & documents :

- Source : Prison 、 Police department 、 Probation department 、 Domestic Violence and Sexual Assault Prevention Center
- Personal : Crime History、 Treatment situation、 Community Performer...,etc.
- Report : Treatment , Evaluation, Psychological assessment, medical records, Home visiting reports..., etc.



Research Methods

(2) Client data collected through E.M:

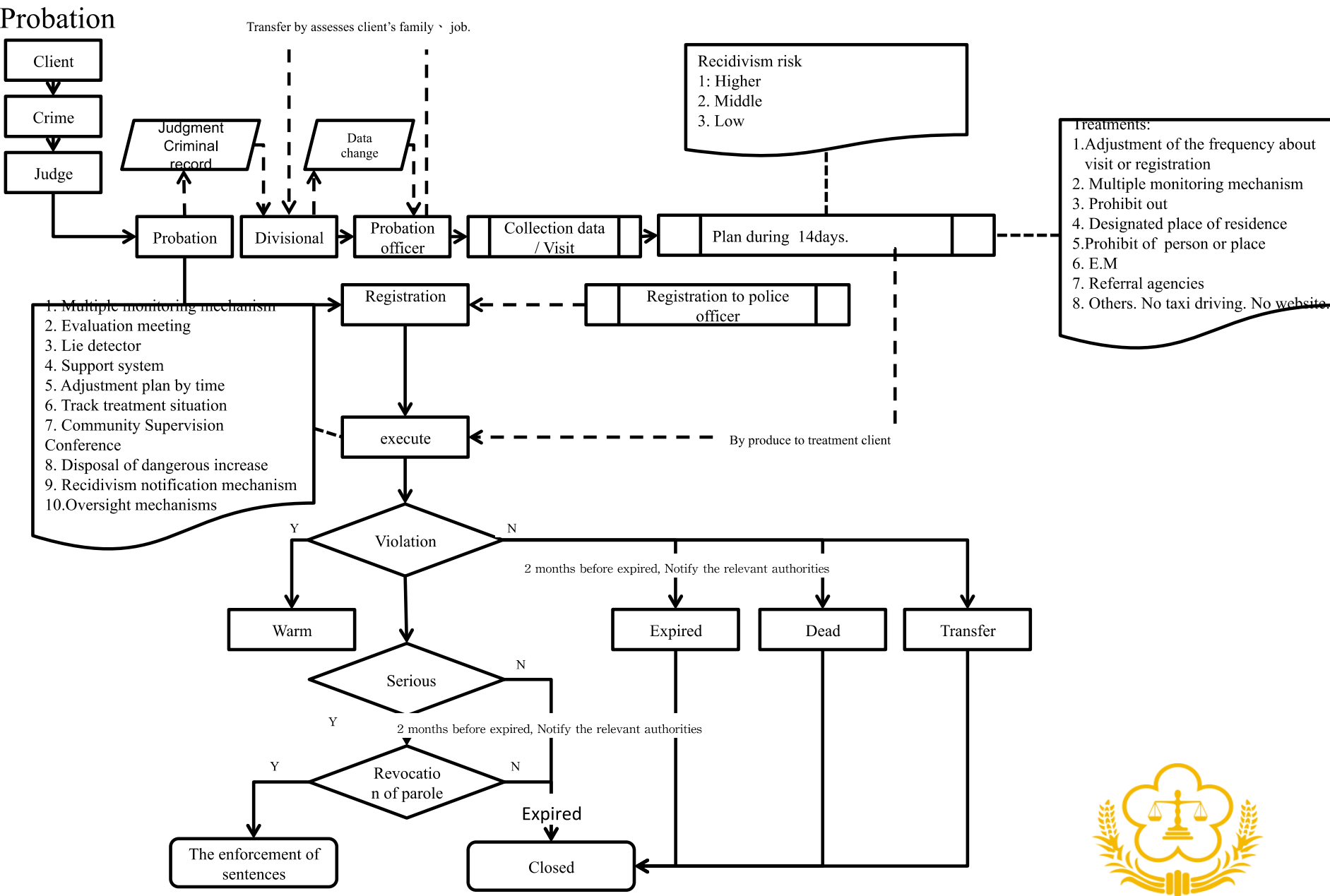
- Life style
- Moving route
- Warning pattern
- Hot spots



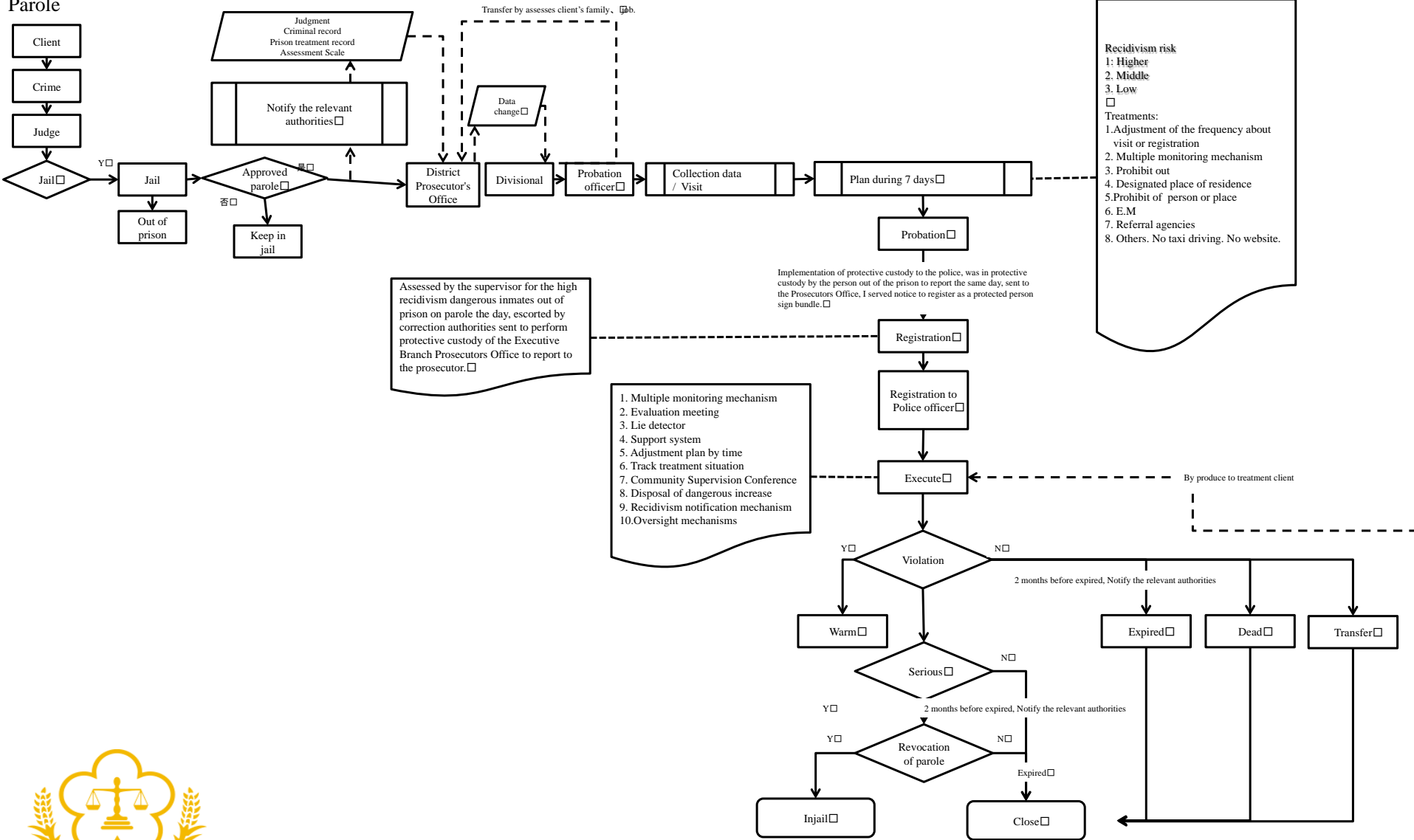
S.O.P of probation knowledge

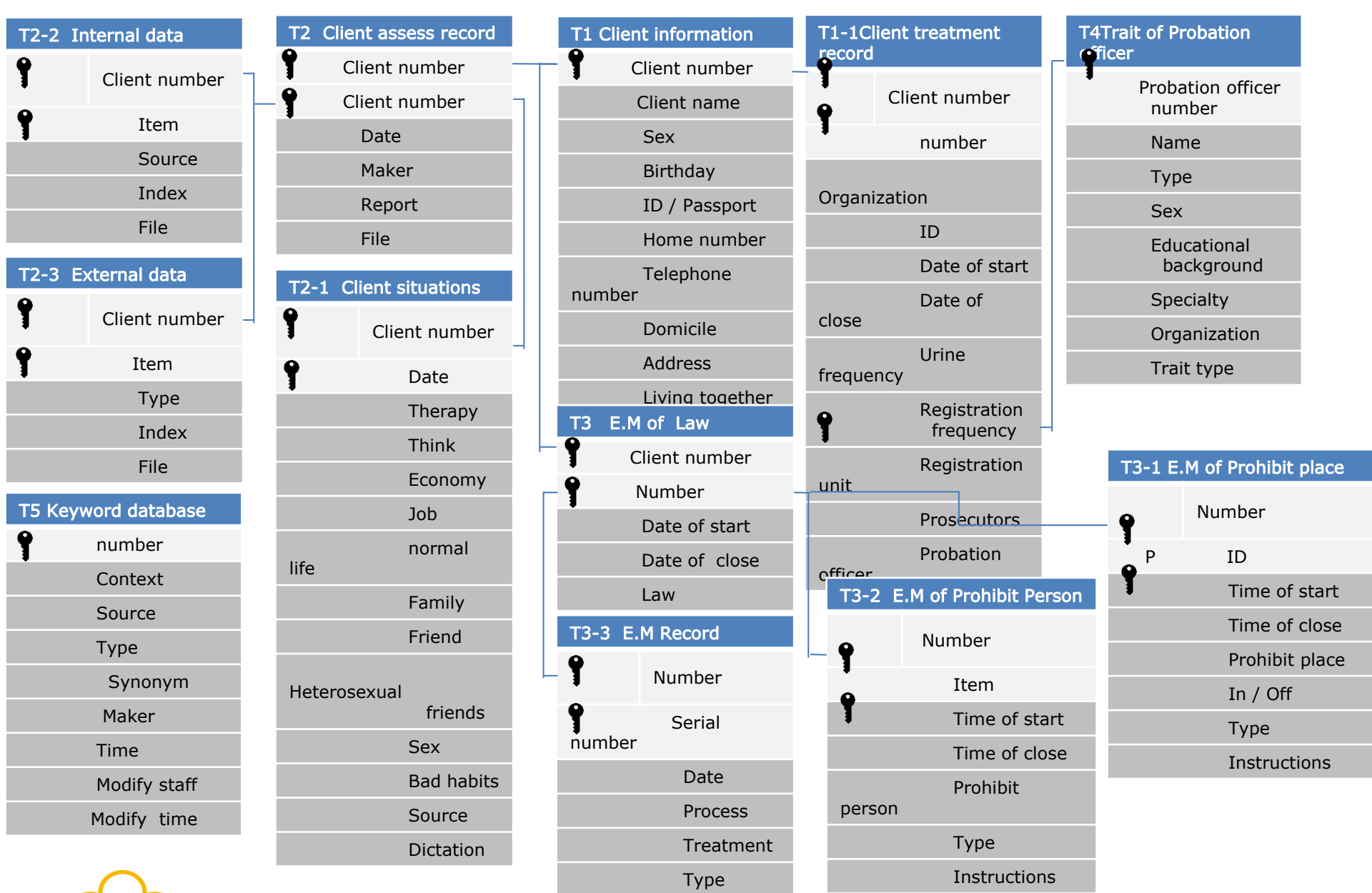
Frame

1	Information flow diagram	
2	Information and Knowledge Process Network Diagram	
3	Knowledge storage schema table	
4	Interpretation of data correspond table	
5	Experts vine map	
6	Experts attribute table	
7	Experts Knowledge Map	Knowledge Source diagram Knowledge Application diagram



Parole



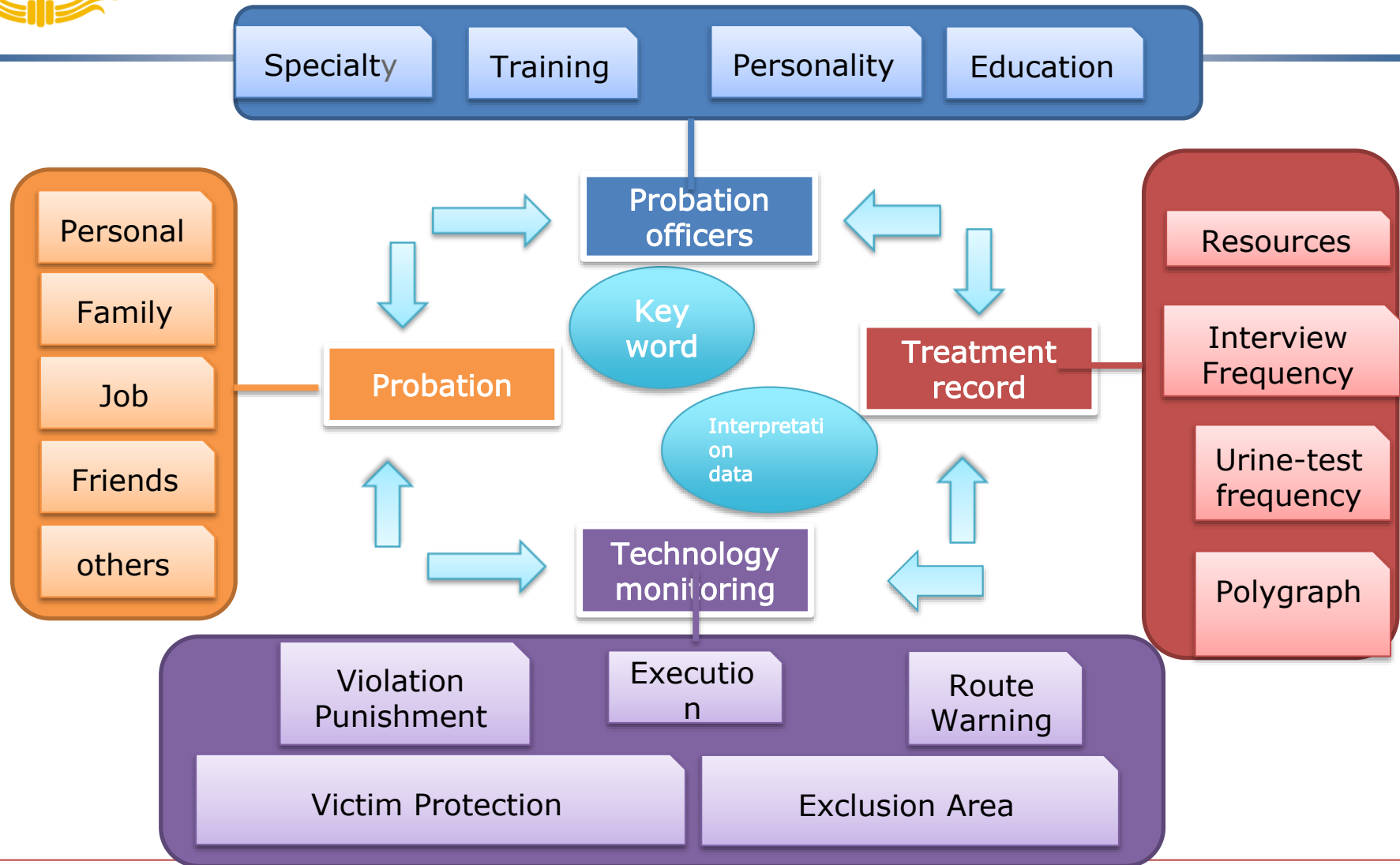


Interpretation of data correspond table

T5 Key word font table			
No	Metadata	Source	Note
1	Number		Use to identify the keyword has unique number
2	Context		
3	Source	Hand key in/ system come out	Extraction keyword from all resource metadata
4	Type		
5	Synonym		If the font table in the keyword with the same meaning, can be recorded through this synonymous number to be used to identify the relationship between them synonymous keywords.
6	Set staff		
7	Time		
8	Modify staff		
9	Modify time		



Experts vine map





Experts attribute

Experts attribute – Probation Officers

Knowledge-oriented

- Must be familiar with the theories and psychology of Sexual Assault, ex: criminology, psychiatry, developmental psychology, criminal psychology, abnormal psychology, personality psychology
- Must be familiar with the relevant laws and regulations of sexual assault statute and administrative law
- Must be familiar with the substantive legal issues related legal knowledge, such as divorce, property division, etc.



Experts attribute

Experts attribute – Probation Officers

Knowledge-oriented

- Must be familiar with consultative professional basis, including family therapy, consultative ability, emotional control, stress counseling
- Must be familiar with the relevant knowledge in social work, such as social knowledge
- Must understand the special situation of sexual assault-related cases



Experts attribute

Experts attribute – Probation Officers

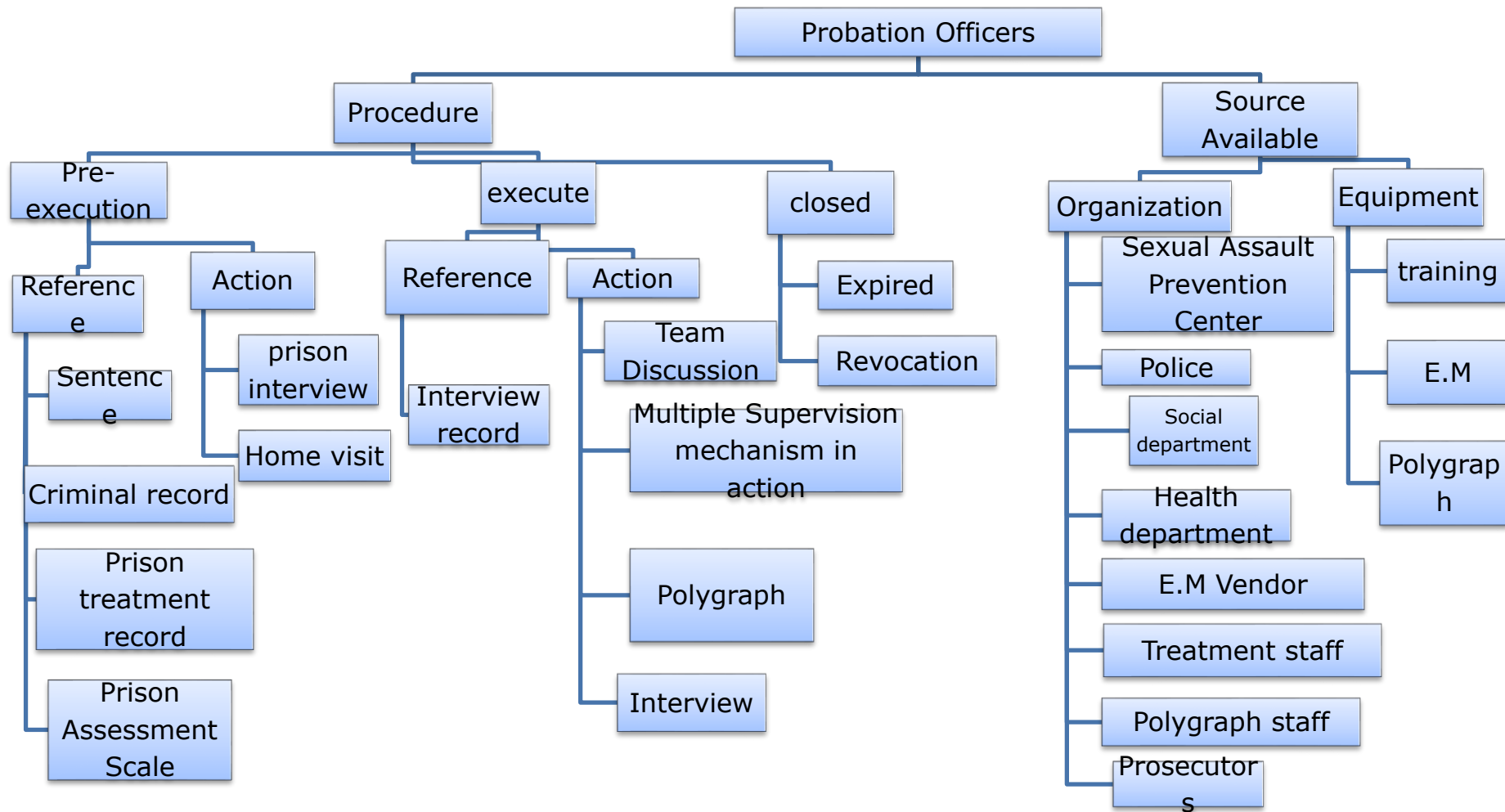
Background Analysis

- The background of Probation Officers :
 - Social work
 - Psychology
 - Law
 - Probation
 - Counseling
 - Administration
 - Police



Expert Knowledge Map

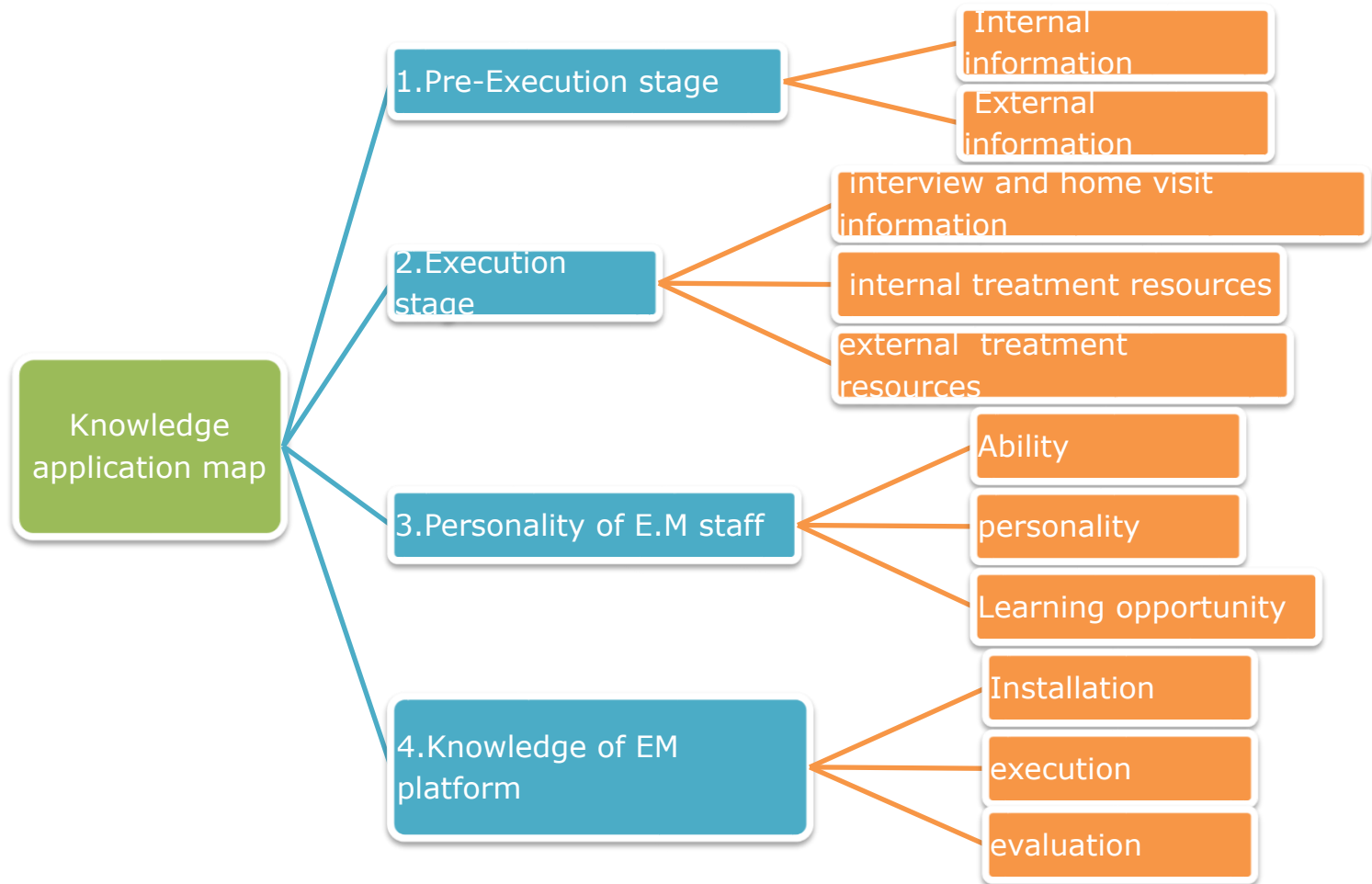
Knowledge Source Map





Expert Knowledge Map

Knowledge Application Diagram





Conclusion

□ Conclusion :

1. Experience sharing
2. Case Management
3. Knowledge Management



Welcome to Taiwan



For any questions, please contact Nina Chen
at momo290@mail.moj.gov.tw